

There's rarely one specific route to a given destination, particularly in a dense area such as Soho, but for expediency we have chosen what we consider to be the shortest or quickest! Useful landmarks are shown in **BOLD**.

Our studio locations are constantly updated. If you spot any discrepancies, know something we don't or have any suggestions then please contact:

david@hobsons-international.com

Tip: Fold this page into four and you have pocket-sized access to each quarter of information!

Useful Travel Information

24 hour travel information: 020 7222 1234

BBC London travel: www.bbc.co.uk/london/travel

BBC Travel News: www.bbc.co.uk/travelnews

Ceefax Travel: page 430

Train times: www.nationalrail.co.uk

Transport for London: www.tfl.gov.uk

Tube map: www.tfl.gov.uk/tube/maps/

Weather: www.metoffice.gov.uk

Address

35 Bedfordbury London WC2N 4DU

Nearest Station

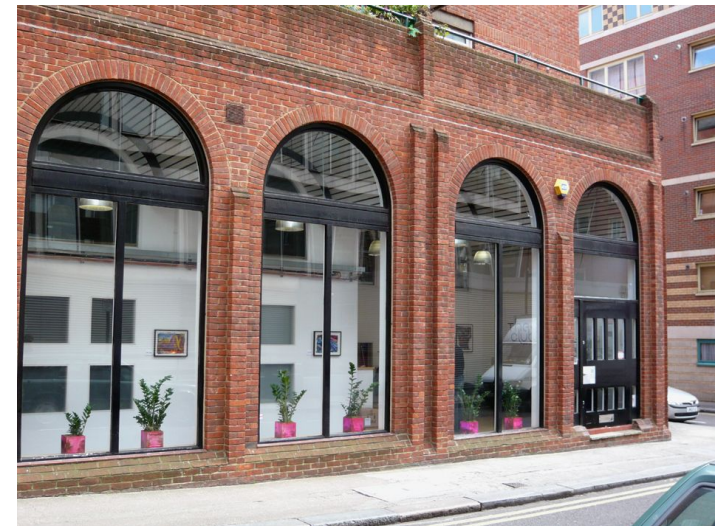
Leicester Square (Northern and Piccadilly)

Directions

Exit 2. Cross into Cranbourn Street past **Angus Steak House** on corner, then right at **Pret A Manger** into St. Martin's Lane. First left into New Row (opposite the **Noël Coward Theatre**). Next right at **The Flight Centre** (opposite **Waterstone's**) short way down on left.

Note

(formerly FRONTLINE)



THE CLUB